



RG&E

An AVANGRID Company

ROCHESTER GAS AND ELECTRIC Circuit 649 Upgrade

CONTACT

Project Information Line: **888.553.5411**

Refer to: **Circuit 649 Upgrade**

Website: **RG&E > Reliable Service**

Email: **outreach@rge.com**

PROJECT OVERVIEW

As part of our commitment to provide safe, reliable service to all our customers, Rochester Gas and Electric (RG&E), in conjunction with our parent company – AVANGRID, is updating the delivery system in our service areas. These upgrades comply with new electric transmission reliability requirements. While making investments to meet the community's growing energy demands, we are working closely with our neighbors to ensure that all improvements are performed with minimal disruption to the environment and the communities we serve.

PROJECT PURPOSE AND NEED

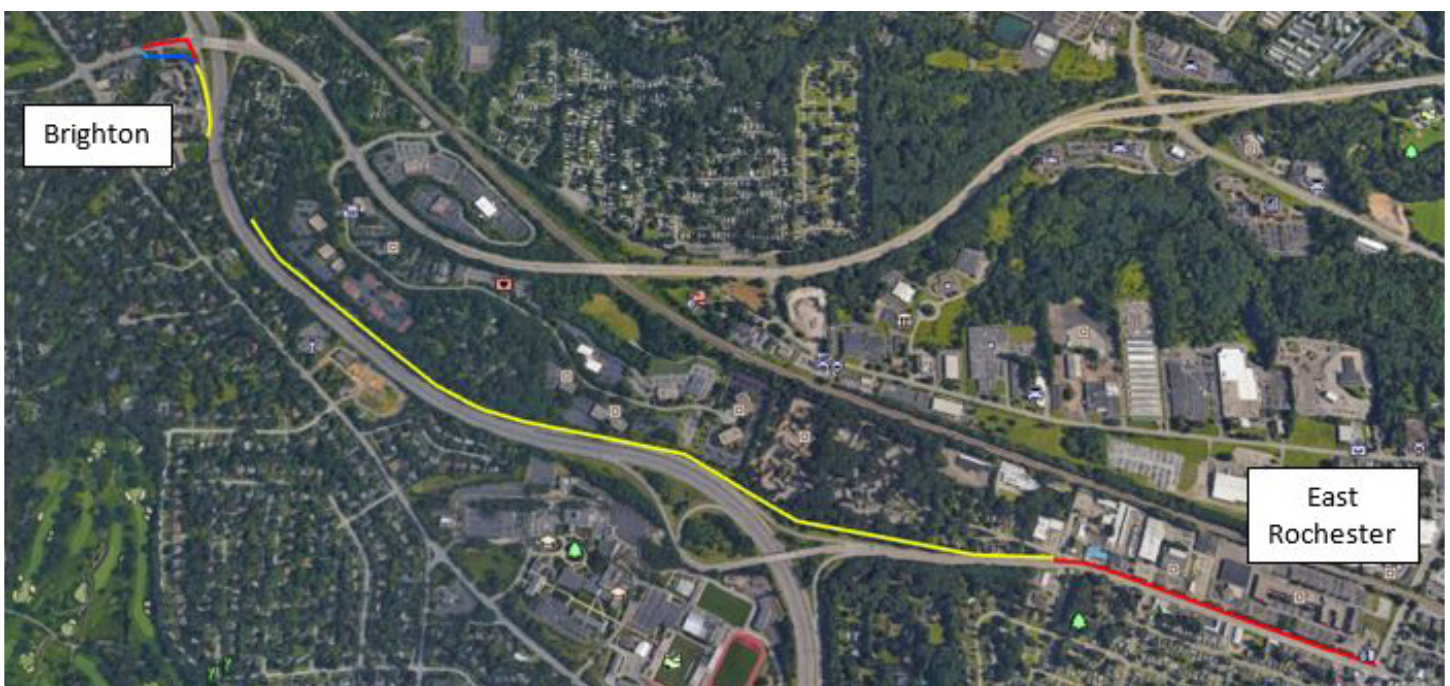
Aging infrastructure and recent outages have highlighted the need to upgrade 2.5 Miles of Circuit 649 (11kV Distribution). This Line runs from Station 745 located in East Rochester from Linden Avenue to Yarmouth Road in Brighton. RG&E has had several outages on this circuit in recent years impacting customers and businesses in this area. This distribution line goes through

the Towns of Brighton and Pittsford and the Village of East Rochester.

This upgrade project will improve the overall resiliency of the entire system while simultaneously modernizing the circuit's components.

PROJECT PURPOSE

This circuit rebuild runs from East Rochester to Brighton. The red line indicates on the map above shows where we are upgrading the underground system on Commercial Street from Washington Street to the Route 490W access ramp. The yellow line indicates where we are rebuilding the overhead pole lines and the distributions portion of the existing circuit. The blue lines adjoining red angled lines indicates where we are rerouting the current underground system south of Linden Avenue to an existing manhole on Linden Avenue and then removing aerial cables and replacing them with new underground sections.



CIRCUIT 649 UPGRADE PROJECT SCOPE INCLUDES:

- 2.5 miles of both overhead and underground transmission lines
- Vegetation Management along RG&E’s right-of-way along 490 as well as along Commercial Street in East Rochester
- Removal of aerial cable and rebuild to current RG&E standards from Commercial Street East Rochester to Linden Avenue Brighton
- Underground system south of Linden Avenue to be rerouted to an existing manhole on Linden Avenue
- Upgrade of the current underground system
- Off-road tree trimming to maintain reliability of the system

BENEFITS TO THE REGION

- The upgraded circuit work will mitigate system failures (outages) and thereby meet the growing demand for additional power in the region through increased capacity.
- The upgrades will improve the reliability and resiliency of the entire transmission system, ensuring that the safe and reliable distribution of power is maintained.

PROJECT LOCATION

Municipalities Impacted:	Towns of Brighton and Pittsford, Village of East Rochester,
County Impacted:	Monroe
Permitting Required:	Local

ESTIMATED TIMETABLE *subject to change*

Initial Field Work:	Q1 2021
Construction Start:	Q3 2021
In Service Date:	Q4 2021