

## Circuit 257 Upgrades

Manchester/Shortsville, NY

### Project Overview

As part of our commitment to provide safe, reliable service to all our customers, Rochester Gas and Electric Corporation (RG&E), in conjunction with our parent company – Avangrid, is updating the delivery system in our service areas. These upgrades comply with new electric distribution reliability requirements.

While making investments to meet the community's growing energy demands, we are working closely with our neighbors to ensure that all improvements are performed with minimal disruption to the environment and the communities we serve.

**Project Information Line:** 1.888.553.5411

**Refer to:** Circuit 257 Upgrades

**Email:** [outreach@rge.com](mailto:outreach@rge.com)

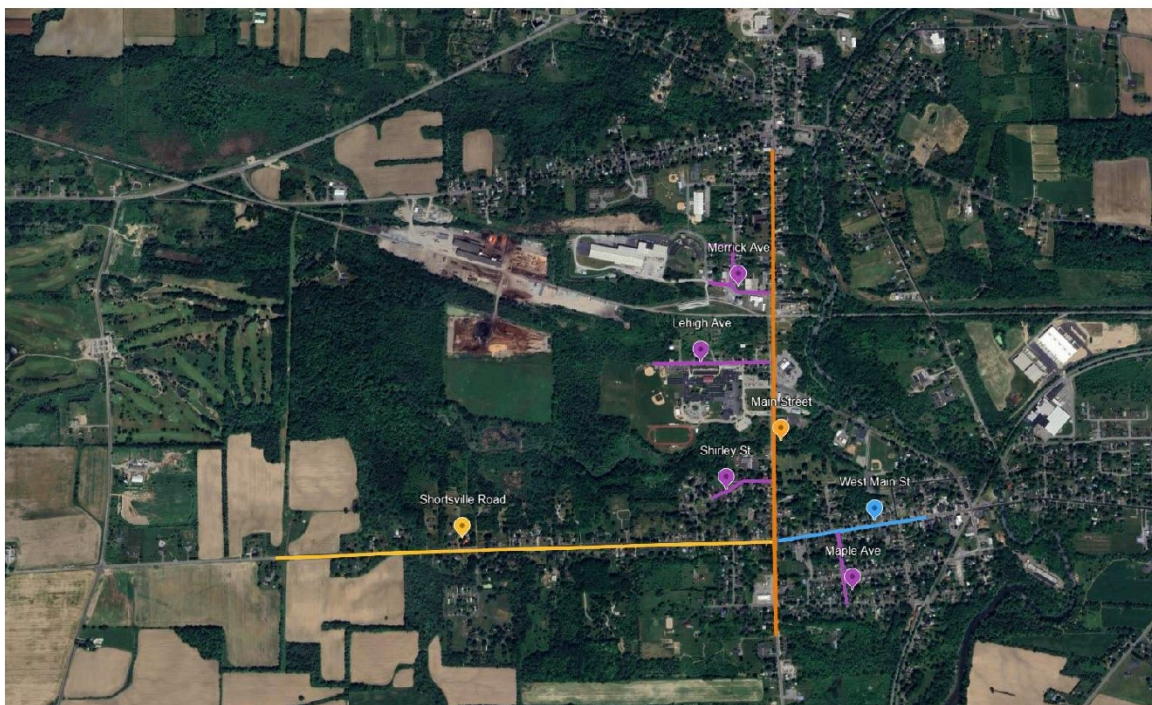
**Website:** [RG&E > Reliable Service](#)

### Project Purpose and Need

To comply with more stringent reliability standards issued by the North American Electric Reliability Corporation (NERC), we are planning an upgrade of certain components of the electric delivery systems in the Towns/Villages of Manchester and Shortsville. We previously completed transformer and facilities upgrades at Station 156 in the Village of Manchester. In this next phase, we will be upgrading the lines, structures and equipment along Circuit 257.

Phase 2 of our project will involve upgrading assets on Circuit 255.

This modernization and replacement effort will improve the overall resiliency of the grid while simultaneously upgrading the technological components using safer and up to date industry standards. The improvements to other outdated infrastructure will ultimately improve the resiliency and reliability of the electrical system.



*The Circuit 257 Upgrade Project will impact Route 21/Palmyra St. and some adjacent streets/neighborhoods. On-site representatives will schedule/coordinate with customers and provide expected durations prior to any outages.*

### Upgrade Project Scope Includes

- Converting Station 156 from 4.16kv substation to 12.47kv substation.
- Converting Circuit 257 to 12.47kv.
- Upgrading conductors on various lines and installing SCADA Devices and transformers to prep for the conversion.
- Replacing 62 utility poles.

### Regional Benefits

- These upgrades will improve the reliability and resiliency of the entire transmission system, ensuring that the safe and reliable distribution of power is maintained.
- The modern digital equipment will make it easier to restore power and reduce restoration time in the event there is a service interruption.

### What to Expect During Construction

- Coordinated minor customer power outages as construction progresses. On-site representatives will schedule/coordinate with customers and provide expected durations prior to outage.
- Increased bucket truck traffic/presence in the work areas, including daily traffic as crews travel between material staging area and work areas.
- Single lane closures/Slowed traffic along Route 21/Palmyra St. and some adjacent streets/neighborhoods throughout the entire project. We encourage impacted customers to plan accordingly, taking alternate routes when possible. Please assist us in maintaining public safety by staying clear of project work zones and adhering to posted signage during construction.

### Project Location

Municipalities: Manchester, Shortsville

---

County Impacted: Ontario

---

Permitting Required: Local, DOT

---

### Estimated Timetable *(subject to change)*

Project Start: Q3 2024

---

Project Completion: Q1 2025

---

In Service Date: Q1 2026

---