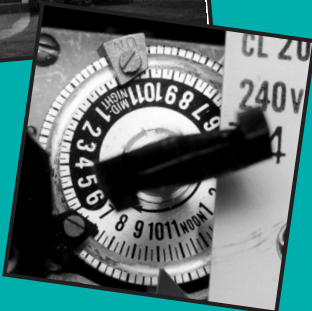
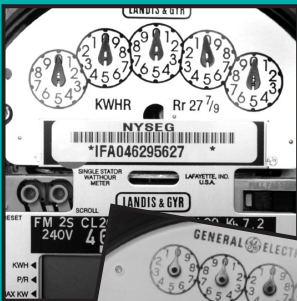


# NYSEG

Reliable. Essential.

## Electricity Service Rate

Service Class 8,  
Rate No. 115-08-00



# Residential Day-Night

**Reliable.** *Essential.*

# *Residential Day-Night Service Rate*

---

**NYSEG's Residential Day-Night electricity service rate\* offers another option to NYSEG electricity customers to effectively manage their energy costs.**



**If you are a NYSEG residential customer who uses at least 1,000 kilowatt-hours (kwh) of electricity per month and can shift approximately 20% of your total usage to the nighttime service hours, you may be able to benefit from the Day-Night rate.**

\* Service Class 8, Rate No. 115-08-00

# *Residential Day-Night Service Rate*

---

## **How does the Residential Day-Night service rate work?**

During nighttime service hours, we sell electricity at a lower price to many of our residential customers. This optional service is available to residential customers who qualify, and it applies to all electricity used between approximately 11:30 p.m. and 7 a.m. Eastern Standard Time (12:30 a.m. to 8 a.m. Eastern Daylight Time).

## **Why does NYSEG have a Residential Day-Night service rate?**

The Day-Night service rate allows us to charge based on time-of-day differences in the cost of providing electricity. During daytime service hours, when customer demands for electricity are highest, the cost of providing electricity is greater than at nighttime service hours when customer demand is lower.



## **What's the difference in cost?**

With Residential Day-Night service, the nighttime service rate per kilowatt-hour (kwh) is about two-thirds the cost of the daytime service rate. However, there is a higher monthly meter charge, and the cost per kwh for electricity used during the daytime service hours is higher than our regular residential service rate. Therefore, it's important to review your use of electricity carefully before switching to Day-Night service rate.

## **Will I save money if I switch to Residential Day-Night service rate?**

It depends on the amount of electricity you use and when you use it. The greater the percentage of electricity you use during the nighttime service hours, the greater your savings.

In general, only those customers who have considerable nighttime usage will benefit. Unless you have appliances like electric space heaters or an electric water heater controlled to operate during the nighttime hours, you may not use enough electricity during the nighttime service hours to benefit. You must use at least 1,000 kwh of electricity per month to qualify for and have approximately 20% of your total usage during night time service hours to benefit from the Residential Day-Night Service rate.

We can help determine if you will benefit from the Day-Night service rate. Just contact our Customer Service Call Center at 1.800.572.1111, Monday through Friday, 7 a.m. to 7 p.m.

# Nighttime Service Hours

---

## Why are the nighttime service hours different during daylight-saving time?

We don't reset the clocks in our Day-Night meters for Eastern Daylight Time. As a result, the nighttime service hours are from 12:30 a.m. to 8 a.m. from the second Sunday in March until the first Sunday in November. Any timers you use to control equipment or appliances during the nighttime service hours should always be synchronized with the clock in the electric meter.

### **Eastern Daylight Time (EDT)**

*Nighttime Service Hours:*

12:30 a.m. to 8 a.m.

*When:* The second Sunday in March until the first Sunday in November.



### **Eastern Standard Time (EST)**

*Nighttime Service Hours:*

11:30 p.m. to 7 a.m.

*When:* The first Sunday in November until the second Sunday in March.



## What equipment and appliances can be controlled to operate during the nighttime service hours?

Electric space heating and domestic water heating controlled to operate during nighttime service hours can provide substantial savings. These other appliances can also be shifted and controlled for use during the nighttime service hours:

- Dehumidifiers
- Self-cleaning ovens
- Pool filters
- Clothes dryers
- Exterior lighting
- Air conditioners
- Heat pumps
- Engine block heaters
- Waterbeds
- Dishwashers



Using any one of these items alone during the nighttime service hours would not justify switching to Day-Night service unless use is substantial. However, if you already use Day-Night service, you may want to shift the use of these appliances to the nighttime service hours whenever possible.

If it's inconvenient to manually turn on an appliance during the nighttime service hours, such as a pool filter or a dishwasher, you can use a timer to turn the appliance on and off automatically.

Farmers on the Day-Night service rate can reduce their energy costs if they complete at least one of their milkings during nighttime service hours.

# *Day-Night Meters*

---

## **How is Day-Night service electricity use recorded?**

Both daytime use (electricity used between approximately 7 a.m. and 11:30 p.m. EST) and nighttime use (between approximately 11:30 p.m. and 7 a.m. EST) are recorded by a Day-Night meter. These meters are either mechanical or electronic.

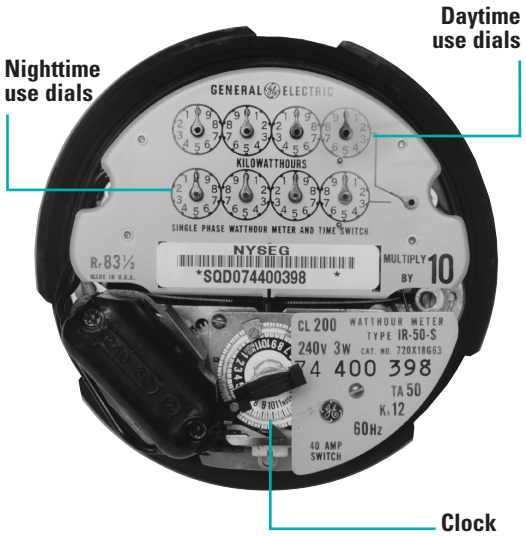
**Note:** As of July 1, 2003 electronic meters will be installed for all new Day-Night service requests.

## **How do mechanical meters differ from electronic ones?**

Mechanical Day-Night meters record daytime electricity usage on the top set of dials and nighttime usage on the bottom set.

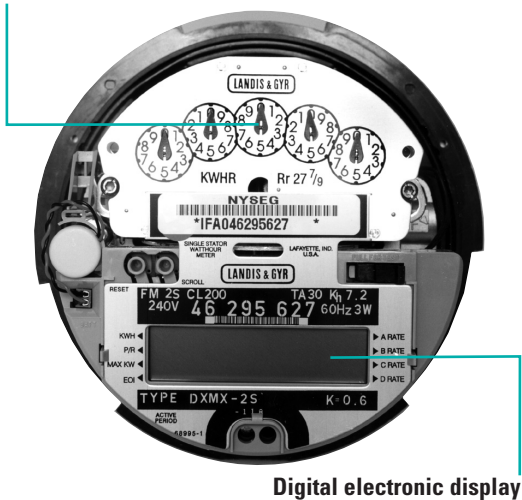


## Mechanical Meter



## Electronic Meter

Dials record total electric use



Digital electronic display

## Electronic Meters

Electronic meters use one set of dials to record the total amount of electricity used. Below this set of dials is a changing digital electronic display.

The digital electronic display on an electronic meter sequences through a number of displays, showing:

- A series of "8s" which indicates the numbers on the display are working correctly.



- The meter number.



- Total electricity used (cumulative use), indicated by "2" or "TOTAL."



- Electricity used during the daytime service hours (cumulative), indicated by "3" or "A."



- Electricity used during the nighttime service hours (cumulative), indicated by "4" or "B."



- Time of day EST shown on a 24-hour clock.



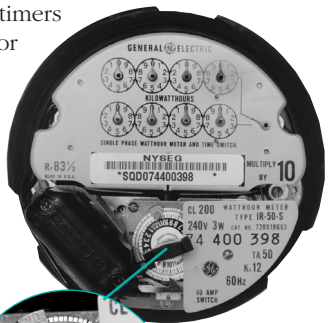
**Note:** The order in which this information appears may vary depending on the manufacturer of the meter.

## What if my power goes off?

Electronic meters contain a battery that will keep the meter's internal clock running even during a power interruption. This ensures that your daytime and nighttime use of electricity are recorded properly.

Mechanical meters do not contain batteries. In the event of a power interruption, we will reset the clock in the meter to the correct time, as needed, whenever we read the meter.

**Remember:** If you use timers to control equipment or appliances to operate during the nighttime service hours, they should always be synchronized with the clock in our electric meter.



**Clock in electric mechanical meter**



## Can I control my water heater or Electric Thermal Storage (ETS) heating equipment with the clock (mechanical meter) or the load control signal (electronic meter) in the Day-Night meter?

### Customers with mechanical meters:

Yes. If you are already using the clock in the Day-Night meter, you can continue using this method to control equipment. However, if you are not already using this method, you will need to use a customer-supplied timer or a load control device that operates independent of the meter to control your equipment.

### Customers with electronic meters:

Yes. If you are already using a load control signal provided from the Day-Night meter, you can continue using this method to control your equipment. However, if you are not already using this method, you will need to use a customer-supplied relay and override system to control your equipment.

**Note:** For new requests, NYSEG does not provide any direct load control or load control signals from the meter.



## **My water heater and ETS heating system are controlled by the Day-Night meter. Can I install equipment to "bypass" the control supplied by NYSEG?**

Yes. Consult with your electrician to learn how this can be done.

## **How much does it cost to have a Day-Night meter installed?**

There is no NYSEG charge for the installation of a Day-Night meter. Your local electrical contractor has information on the methods of controlling equipment such as relays or time clocks, and installation costs for these items. Electronic meters will be installed for all new Day-Night service requests.

## **How do I apply for the Day-Night service rate?**

If you think you would benefit from the Day-Night service rate, call us at 1.800.572.1111 Monday through Friday, 7 a.m. to 7 p.m. We'll be happy to assist you.



## **What if I don't want to remain on the Day-Night service rate?**

Once you change your electricity service classification from Regular service rate to Day-Night service rate, you must remain on that service for a minimum of one year. Switching back and forth between service classifications for short periods of time is not permitted.

For more information about the Day-Night service rate or meters, please contact us at 1.800.572.1111.

**Reliable.** *Essential.*

# NYSEG

**Reliable.** Essential.

[www.nyseg.com](http://www.nyseg.com)



An Energy East Company

NYSEG 1/07-0086 CP-012



*Part of NYSEG's commitment to the environment ...*  
printed with soy ink on recycled paper.